



123a Soundwell Road, Bristol, BS16 4RD

£1,075 Per month



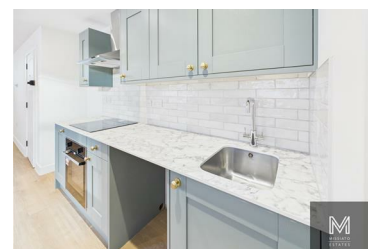
Beautifully designed BRAND NEW apartment — one of four in a stylish conversion that is days from completion! Offering contemporary open-plan living in the heart of Staple Hill. This ground-floor apartment boasts a private courtyard garden, perfect for enjoying the outdoor space, with direct access from your bedroom.

Inside, enjoy a fully refurbished interior with an open plan living area and modern kitchen, a shower room and a separate double bedroom. The studio has been designed to maximise space — ideal for a professional or a couple wanting comfort, convenience, and a bit of outside space.

Located just minutes' walk from Staple Hill High Street, you have a wide selection of independent shops, cafés, pubs and essential services on your doorstep. Commuting is easy with excellent transport links close by and regular bus routes into Bristol city centre.

Call to arrange your viewing today and see the finished product.

- Newly renovated throughout
- Open plan living/kitchen
- Double bedroom with access to courtyard garden
- Fantastic transport links
- Ideal for couples or professionals
- Groundfloor apartment
- Generous and contemporary shower room
- Excellent location
- Close to local amenities



375 Gloucester Road Bristol, BS7 8TN

Tel: 0117 244 2360 Email: enquiries@missiatoestates.com